

powder booths

LAB POWDER BOOTH WITH ROLLWAY CASTER BASE

PANELS

Panels are fabricated from 18-gauge prime quality stainless steel, flanged and precision punched on 6" centers for maximum rigidity. Panels are fastened together with 5/16" nuts and bolts, and are to be sealed with the provided caulk following assembly.

BASE ASSEMBLY

The rollaway base assembly cabinet and floor support is fabricated with 3" channel steel and formed 10-gauge mild steel (welded construction). The finish will be white powder coating.

ILLUMINATION

Lighting is provided by Class I Division II, 48" long, fluorescent, 32 Watt, T-8 type, four-tube fixture, mounted behind safety glass; appropriately sealed from the interior of the spray booth. All fixtures are UL listed and approved for their intended use and placement.

PLC BASED PURGE CONTROL

This feature assures the safe operation of the coatings enclosure, by maintaining the airflow at design levels. During operation overspray powder accumulates on the cartridge filters. As the cartridge filters load, airflow decreases and negative pressure rises within the air handler. A timer activates a system of air purging valves that clear the cartridge filters of accumulated powder to ensure maximum life.



LAB POWDER BOOTH

FEATURES/BENEFITS/ADVANTAGES

- Streamlined Modular Design
- Extremely Quiet – less than 78 DBA
- Top Final Filter Discharge Environmentally Friendly
- Easy-to-Change Airtight Cartridge Filters
- Compact Plenum Design Offers Larger Work Area
- Locking Caster Base
- Fork Truck Tubes for Transfer

CONTROL EQUIPMENT

- PLC Controlled
- On Demand Adjustable Pulsing
- Quick Clean/Purge Mode
- Manual Pulse Off Switch
- Circuit Breaker Protection
- 120 Volt Interlocked Plug for Power Supply

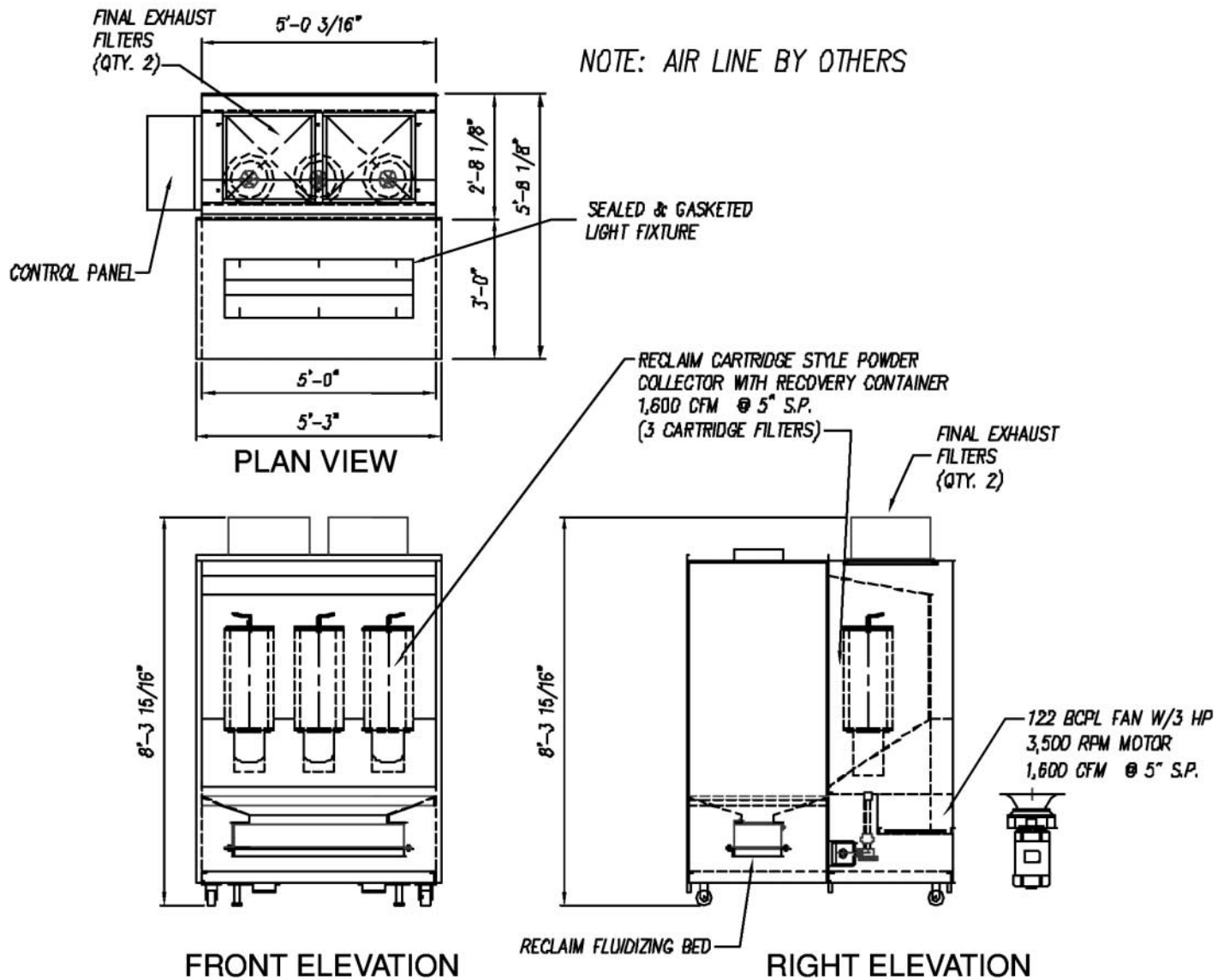
Col-Met Spray Booth products comply with OSHA and NFPA regulations.



CONTROL PANEL

BOOTH DIMENSIONS AND SPECIFICATIONS ON REVERSE SIDE

BOOTH DIMENSIONS AND SPECIFICATIONS OF LAB POWDER BOOTH



AutoQuip Canada Ltd.
 e-mail: sales@autoquip.ca
 toll free: 866-325-2886 // www.autoquip.ca



COL-MET
 spray booths
 expect more